

BluePrint/CAM350 2025 Release Installation Guide

Contents

Siemens Product Releases Applicable to this Guide	2
System Requirements.....	2
User Requirements	2
License Server Host OS Requirements	3
Product Installation	4
Product Licensing	4
Supported HostIDs for a product license	5
License File Content	5
Obtaining the HostID from a License Server.....	6
License File Sources.....	9
New Installation Process – Node Locked.....	10
New Installation Process – Single User Network License	12
New Installation Process – License Server Windows OS	14
New Installation Process – Network License Client Computer	16
New Installation Process – License Server Linux OS Virtual Machine.....	18
Update Process – Product Software Only.....	20
Update Process – License File (and License Manager).....	21
Using Custom Installation	23
License Borrowing	26
Redundant License Servers.....	27
License Rollover - Multiple License Servers on the Same Network.....	28
Silent Installation.....	29
Patents, Copyrights and Trademarks.....	32

Siemens Product Releases Applicable to this Guide

This installation guide is applicable to releases of products including:

Products	Release Version (all builds)
CAM350	Release 15.2
DFMStream (a derivative of CAM350)	Release 15.2
BluePrint-PCB	Release 7.2

If you are working with earlier releases of CAM350/DFMStream or BluePrint, consult the previous release installation guides located on Support Center.

System Requirements

The following are minimum requirements to use BluePrint/CAM350 (“Products”) on a client computer.

Note: The product installation was developed to detect incompatible operating systems or incompatible MS Office and abort the installation.

Software Requirements

- 64 bit Windows® OS version 10 or 11

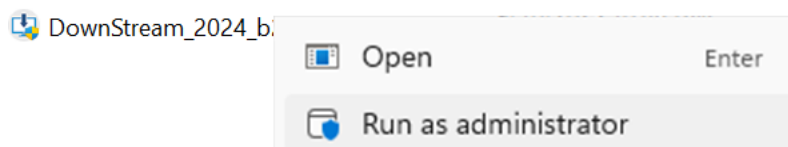
Hardware Requirements

- Processor: 2GHZ or faster processor
- Memory: 8-16 GB RAM
- Disk Space: 2GB available, SSD recommended
- Graphics: Discrete graphics card with on-board memory preferred for 3D performance

User Requirements

If you have Restricted User privileges on the computer or virtual machine, you may be restricted from completing the install of the products or license manager. If this occurs, contact your network administrator.

Alternatively, on Windows OS, locate the installation application in Windows explorer, right click and choose **Run as Administrator**.



License Server Host OS Requirements

The license manager for network licensing can be hosted on a computer or virtual machine. The computer or virtual machine license server must have an operating system compatible with the product license manager.

Computer Hosted License Server Supported OS:

Operating System:	CAM350 15.2 BluePrint 7.2	HostID
Windows	64 bit Windows 10,11 Windows Server 2016, 2019, 2022	MAC Address or Dongle
Linux	Red Hat RHEL 7.9 or 8.10	MAC Address

Virtual Machine License Server Supported Platforms and Guest OS:

VM Provider: Platform	CAM350 15.2 BluePrint 7.2	HostID
VMware: Desktop (formally VMWare ESX) Server (formally ESXi)	64 bit Windows 10,11 Windows Server 2016, 2019, 2022 Red Hat RHEL 7.9 or 8.10	VM_UUID
Microsoft: Hyper V (2012)	64 bit Windows 10,11 Windows Server 2016, 2019, 2022 Red Hat RHEL 7.9 or 8.10	VM_UUID
Parallels: Desktop for MAC	64 bit Windows 10,11	VM_UUID
Citrix: XenServer	64 bit Windows 10,11	VM_UUID
Oracle: Virtual Box	64 bit Windows 10,11	VM_UUID
Amazon: EC2	64 bit Windows 10,11 Windows Server 2016, 2019, 2022	VM_UUID
Google: Compute Engine	64 bit Windows 10,11 Windows Server 2016, 2019, 2022	VM_UUID
Microsoft: Azure	64 bit Windows 10,11 Windows Server 2016, 2019, 2022	VM_UUID
NUTANIX: Acropolis (AHV)	64 bit Windows 10,11 Windows Server 2016, 2019, 2022	VM_UUID
QEMU: Quick Emulator	64 bit Windows 10,11 Windows Server 2016, 2019, 2022	VM_UUID

Product Installation

The product installation is for Windows OS (computer or virtual machine) use only. It is an application used to:

- Install or update the license manager
- Install or update a product license
- Install the dongle device driver for Windows
- Test license check out
- Install or update the products

Consult [Using Custom Installation](#) section for details on custom installation.

Product Licensing

The products require a license file and optionally a license manager be installed to use the products.

License Term	Definition
License file	The products are secured by a license file bound to a unique identification (or hostID) on a computer or virtual machine that hosts the license manager. The content of a license file determines the products, depth of functionality and number of concurrent usages for the products.
License Manager	License manager is the product license utility installed on all license servers providing license access to client computers.
HostID	A unique identification string used to bind a license file to a host computer, dongle (USB Device) or virtual machine. A hostID can be the MAC address of a network interface device, dongle serial number or VM_UUID of a virtual machine.
License Count	The number of concurrent uses allowed for the products and functionality.
Keyless License	A single use node-locked product license configuration bound to a MAC address as hostID for licensing. This is the default node-locked license configuration.
Client Computer	A computer that hosts the products for individual use.
License Server	The license management computer or virtual machine where the License Manager is installed and administering license access.
Node-locked license	A single use, non-sharable product license bound to a MAC Address or dongle as hostID.
Network or Floating license	A single or multiple user, shareable product license typically installed on a license server. A network license file also defines the count of concurrent license usages.
License Expiration (Date)	The calendar date a product license will expire. After the expiration date, product access is denied until a new license file with a later expiration date is installed.

Supported HostIDs for a product license

To receive a license to use the products, a valid HostID must be provided to Siemens for license generation. There are three types of HostID's supported for product licensing:

Dongle Serial Number – the serial number of a secure device provided by Siemens. The device must be attached to a USB port of a computer to serve as hostID for licensing. The serial number is a 10 digit number separated by hyphens. For example:

010-741-1234

MAC Address – a Media Access Control (MAC) address is a serial number assigned to a network interface device on a computer. It is a 12 character string displayed in pairs of two characters separated by colons, dashes or spaces. Only numbers 0 through 9 and letters A through F are used. For example:

00:08:B9:A7:F1:CA

UUID – a universal unique identifier or a 128 bit number used to uniquely identify a virtual machine. The sixteen octets of a UUID are represented as 32 hexadecimal (base 16) digits. They are displayed in five groups separated by hyphens in the form 8-4-4-4-12 for a total of 36 characters (32 alphanumeric characters and four hyphens). To serve as a product license HostID, the UUID must include its preceding UUID type string. For example:

VM_UUID=123e4567-e89b-12d3-a456-426655440000

License File Content

A product license file is an ASCII file with custom encrypted content that becomes invalid and unusable if edited improperly. The product installation will make changes to a network license file to correctly identify license server, server port address and path to the license manager daemon. The first two lines of a newly generated license file for a network license may appear as (without bold):

```
SERVER REPLACE_THIS_HOSTNAME 606DC7C67F8F TCP:7102  
DAEMON act_inc D:\REPLACE_THIS_FOLDER\act_inc.exe
```

For a license file to be valid, the content in **bold** must match the license server name, TCP port, path to and exact name of the act_inc.exe license daemon on the server. The product installation will update the two lines of the license file during license file installation. However, at times, manually editing of these strings may be required. Only the bold portions of the license file can be edited. Changes to other portions of a license file will invalidate the license.

Obtaining the HostID from a License Server

The following section provides details on obtaining a valid HostID for use with product licensing.

To obtain a MAC address on Windows 10 or 11:

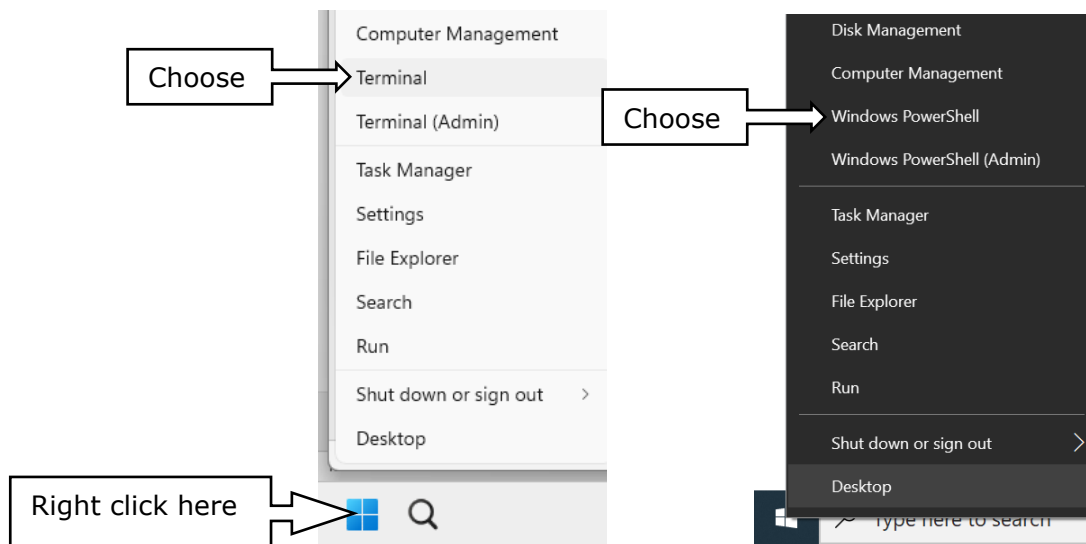
Each network interface device on a computer has a MAC Address. Typically, more than one network device is active on a computer. There may be a hard wired and wireless network device within the computer. The computer may be attached to an external docking station with an internal hard wired network device.

Note: MAC Address is not supported as a HostID for virtual machines.

Follow the steps below to obtain a list of all MAC addresses present for all network devices. Choose a preferred MAC address for licensing from the list.

Note: When performing these steps on a computer connected to a docking station, port repeater or other such device, we recommend you disconnect those devices before you begin. Otherwise, the MAC address obtained may originate from that device and not the host computer.

1. Locate your cursor over the Windows **Start** icon and click right mouse button.
2. From the pop-up menu, choose **Terminal** (Windows 11) or **Windows Powershell** (Windows 10)



3. On the command line enter **ipconfig /all** and press enter.

```
Windows PowerShell
Copyright (C) Microsoft Corporation. All rights reserved.

Install the latest PowerShell for new features and improvements! https://aka.ms/PSWindows

PS C:\Users\markg.DST> ipconfig /all
```

Hint: Double click title bar to go full screen

- In the detailed report that results, you may note several network devices (adapters) listed. The two types of network adapters applicable for product licensing – Wireless LAN or Ethernet adapter are shown below. Some computers, such as a laptop, may have both adapters.

Wireless LAN adapter Wi-Fi:

```

Wireless LAN adapter Wi-Fi:
Media State . . . . . : Media disconnected
Connection-specific DNS Suffix . : downstreamtech.com
Description . . . . . : Dell Wireless 1830 802.11ac
Physical Address. . . . . : 52-B8-03-1D-E1-E0
DHCP Enabled. . . . . : Yes
Autoconfiguration Enabled . . . . : Yes

```

Ethernet adapter (non-Bluetooth) Local Area Connection (unnumbered):

```

Ethernet adapter Local Area Connection:
Media State . . . . . : Media disconnected
Connection-specific DNS Suffix . : downstreamtech.com
Description . . . . . : Intel(R) 82579LM
Physical Address. . . . . : F0-DE-F1-47-E0-BD
DHCP Enabled. . . . . : Yes
Autoconfiguration Enabled . . . . : Yes

```

- Locate your preferred adapter type and note the “Physical Address”. This is the device’s MAC address.
- Provide the preferred network adapter MAC Address to Siemens for license generation.

Note: When providing the MAC address to Siemens, characters may be provided in upper or lower case with or without dashes.

Tip: When both wireless and Ethernet adapter types are present, Siemens recommends Ethernet adapter as hostID. Wireless adapters may be disabled or turned off to preserve power on laptops. Power disruption to a wireless adapter may result in temporary deactivation of the license until power is restored.

To obtain a UUID from a Virtual Machine with Guest Windows OS

Note: Only 64 bit Windows 10 or 11 guest OS are supported for licensing of Releases 15.x/7.x or later. Refer to the License Server Host OS Requirements portion of this document for details.

Siemens provides a utility to extract the correct Flexnet UUID required for licensing on guest Windows OS virtual machines. While there are other means to extract a UUID from a VM, this utility must be used to obtain the correct UUID used as HostID for product licensing.

These steps must be performed on the Virtual Machine that will serve as license server and host the license manager.

1. On the license server virtual machine, download the utility DSTVMHOSTID from the Siemens Support Center web site.
2. Uncompress the file and execute DSTVMHOSTID.exe.

Note: Administrator rights may be required to run the utility on the virtual machine.

3. The utility will install and run a licensing applet, interrogate the OS for the UUID and present the UUID. Additionally, the UUID string is copied to the paste buffer for pasting to an e-mail or document for sending to Siemens.

CAUTION: Changes to Virtual Machines Will Invalidate a License

Changes to a license server virtual machine, like automated VM host software updates, increasing memory and other changes often result in an unintended change to the VM's UUID. When a license server UUID is changed the product license will no longer work and a new license will be required. Unintended changes to a license server UUID can be avoided by adding a specific statement to the virtual machine configuration file (vmx file) of the virtual machine. To avoid UUID changes add the following statement to the vmx file for the license server virtual machine:

uuid.action = "keep"

To obtain a UUID from a Virtual Machine with Guest Red Hat Linux OS

Note: Red Hat Enterprise Linux (RHEL) version 7.9 through 8.10 is supported for guest OS licensing of Releases 15.x/7.x or later. Refer to the License Server Host OS Requirements portion of this document for details.

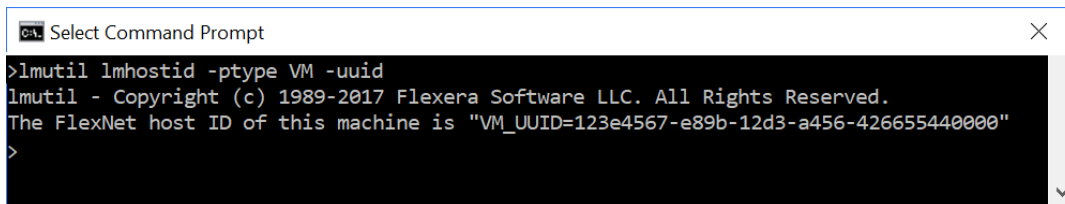
Before you start – Obtaining the UUID from a Linux OS virtual machine has a prerequisite that FlexNet Licensing Service be installed and running. If the FlexNet Licensing Service is installed and running on the virtual machine, proceed to step 1. If the FlexNet Licensing Service has not been installed, Consult the [New Installation Process – License Server Linux OS Virtual Machine](#) section for instructions to download and install the FlexNet Licensing Service.

Siemens provides a utility to extract the correct Flexnet UUID required for licensing on guest Windows OS virtual machines. While there are other means to extract a UUID from a VM, this utility must be used to obtain the correct UUID used as HostID for product licensing.

These steps must be performed on the Virtual Machine that will serve as license server and host the license manager.

1. With the FlexNet Licensing Service running, run **lmutil** in a Linux Command Prompt window with the following arguments.

lmutil lmhostid -ptype VM -uuid



```
ca Select Command Prompt
>lmutil lmhostid -ptype VM -uuid
lmutil - Copyright (c) 1989-2017 Flexera Software LLC. All Rights Reserved.
The FlexNet host ID of this machine is "VM_UUID=123e4567-e89b-12d3-a456-426655440000"
>
```

Note: Sample command window shown.

2. Copy the HostID string for use in an e-mail or other means of communicating the HostID to Siemens.

License File Sources

When installing the products, a license file is required to access the products. License files can only be generated by Siemens. There are two methods for receiving a license file.

By e-mail – a license is requested from Siemens for product evaluation, new purchase, annual maintenance re-instatement, license transfer or other reasons.

During Installation of an Update – a major or dot release of the products is made available. The installation includes a cache of updated licenses for all users with a current annual maintenance contract as of the release date of the software. All license configurations are included such as node-locked, dongle, license server, virtual machine license servers and so on.

Most license files issued by Siemens are created with an expiration date. Each time the installation is used to install an update, users should choose to install a license file from the media to ensure their license expiration date is more recent than their current license.

Note: Subscription licenses are created with an expiration date based on the terms of the subscription.

New Installation Process – Node Locked

License Type:	Node-locked
HostID:	MAC Address or Dongle
Operating System:	64 bit Windows OS (Non-Virtual Machine)

If you purchased a single user node-locked product for a 64 bit Windows OS computer, follow the instructions below to install the product license manager, license file and products.

These steps assume:

- you **have not** previously installed the products.
- you received a node-locked license file and have copied the license file locally for selection from within the installation.
- you have access to (downloaded) the product installation.

1. Close all programs.
2. If using a dongle (USB Device) as HostID, attach it to an active USB port on the computer.
3. Using Windows Explorer, locate the product installation and double-click the executable file to initiate the installation.
4. After a few moments, the **DownStream Installation Wizard** appears.
5. Click **Next** to continue. The Siemens End User License Agreement appears.
6. Review the license agreement. Choose **Agree** and click **Next** to continue. The Select Installation Option page appears.

For new installations, the license manager and license file must be installed before the products.

1. Select **Install or Update Licensing**. The FlexNet Licensing Service is installed and started.
2. After a few moments, the **InstallShield Wizard for DownStream License Manager** appears. Click **Next** to continue. The Customer Information page appears.
3. Optionally, enter **User Name** and **Organization** and click **Next** to continue. The Destination Folder Selection page appears.
4. Accept the default installation folder, or choose **Change** and browse to an alternate destination folder. Click **Next** to continue. The Licensing Specification page appears.
5. On the Licensing Specification page, choose **Browse to find License File** and click **Next** to continue. The Navigate to License file page appears.
6. Enter the path to the local copy of the license file, or click **Browse** and browse to and select the license file. Click **Next** to continue.
7. The Setup Type page appears. To install all product license management content, choose **Complete**.

To customize the license content to install, choose **Custom** and select the content. Consult [Using Custom Installation](#) section for details on custom installations.

8. Click **Next** to continue. The Ready to Install the Program page appears.
9. Click **Install** to start installation of license manager and license file.
10. After a few moments, license manager is installed, the license file copied to the correct location and a license check out test performed. A prompt appears stating the status of the license check out. If the check out test is successful, click **OK** to continue.
11. Click **Finish** to complete installation of the license manager and license file.

A few moments after the last installation page closes, you are prompted to install the products.

1. When prompted *Do you want to install the DownStream products now?* Choose **Yes** to start the installation of the products.
2. After a few moments, the **InstallShield Wizard for the DownStream Products** appears. Click **Next** to continue.
3. Optionally, enter **User Name** and **Organization**. Click **Next** to continue.
4. The Setup Type page appears. To install all products and content, choose **Complete**.

To customize the product content to install, choose **Custom** and select the content. Consult the [Using Custom Installation](#) section for details on custom installations.

5. Click **Next** to continue.
6. Make selections of Installing either **CAM350(DFMStream)** or **BluePrint**, or **Both**.
7. Click **Next** to continue. The Ready to Install the Program page appears.
8. Click **Install** to start installation of the products.
9. After a few moments, the products are installed and a product registration is performed.
10. Click **Finish** when the installation is completed.
11. To start the installed product(s), locate the product shortcut(s) installed on the desktop of the computer.

New Installation Process – Single User Network License

License Type:	Single User Network (For Demonstration systems)
HostID:	MAC Address, Dongle or UUID
Operating System:	Any Windows PC or Windows OS Virtual Machine

If you received a single user demonstration system for a 64 bit Windows OS computer, follow the instructions below to install the product license manager, license file and products.

Note: The use of a demonstration system is restricted to Siemens approved third-party personnel. Commonly product resellers or technical support persons.

In this license configuration, a single computer is both license server and client computer with products installed. Other computers on your network can share the single license as additional client computers.

The network license is a single user license. Any client computer on the network will check out a product license when products are started on their computer. This renders the product license inaccessible to other clients until they close the product to check in the license and make it available.

These steps assume:

- you **have not** previously installed the products.
- you received a network license file and have copied the license file locally for selection from within the installation.
- you have access to (downloaded) the product installation.

1. Close all programs.
2. If using a dongle (USB Device) as HostID, attach it to an active USB port on the computer.
3. Using Windows Explorer, locate the product installation and double-click the executable file to initiate the installation.
4. After a few moments, the **DownStream Installation Wizard** appears.
5. Click **Next** to continue. The Siemens End User License Agreement appears.
6. Review the license agreement. Choose **Agree** and click **Next** to continue. The Select Installation Option page appears.

For new installations, the license manager and license file must be installed before the products.

1. Select **Install or Update Licensing**. The FlexNet Licensing Service is installed and started.
2. After a few moments, the **InstallShield Wizard for DownStream License Manager** appears. Click **Next** to continue. The Customer Information page appears.
3. Optionally, enter **User Name** and **Organization**. Click **Next** to continue. The Destination Folder Selection page appears.

4. Accept the default installation folder, or choose **Change** and browse to an alternate destination folder. Click **Next** to continue. The Licensing Specification page appears.
5. On the Licensing Specification page, choose **Browse to find License File** and click **Next** to continue. The Navigate to License file page appears.
6. Enter the path to the local copy of the license file, or click **Browse** to browse to and select the license file. Click **Next** to continue.
7. On the next Licensing Specification page, enter the Computer Name of the computer you are using. Click **Next** to continue.
8. The Setup Type page appears.
9. For single user network installs, choose **Complete** and click **Next** to continue.

To customize the license content to install, choose **Custom** and select the content. Consult [Using Custom Installation](#) section for details on custom installations.

10. Click **Next** to continue. The Ready to Install the Program page appears.
11. Click **Install** to start installation of license manager and license file.
12. After a few moments, license manager is installed, the license file copied to the correct location and a license check out test performed. A prompt appears stating the status of the license check out. If the check out test is successful, click **OK** to continue.
13. Click **Finish** to complete installation of the license manager and license file.

A few moments after the last installation page closes, you are prompted to install the products.

1. When prompted *Do you want to install the DownStream products now?* Choose **Yes** to start the installation of the products.
2. After a few moments, the **InstallShield Wizard for the DownStream Products** appears. Click **Next** to continue.
3. Optionally, enter **User Name** and **Organization**. Click **Next** to continue.
4. The Setup Type page appears. To install all products and content, choose **Complete**.

To customize the product content to install, choose **Custom** and select the content. Consult the [Using Custom Installation](#) section for details on custom installations.

5. Click **Next** to continue.
6. Make selections of Installing either **CAM350(DFMStream)** or **BluePrint**, or **Both**.
7. Click **Install** to start installation of the products.
8. After a few moments, the products are installed.
9. Click **Finish** when the installation is completed.
10. To start the installed product(s), locate the product shortcut(s) installed on the desktop of the computer.

Note: Follow the New Installation Process – Network License Client Computer instructions to enable other computers on the network to access the product license.

New Installation Process – License Server Windows OS

License Type:	Network (or Floating)
HostID:	MAC Address, Dongle or UUID
Operating System:	64 bit Windows OS (Computer or Virtual Machine)

If you purchased a product with a network license for a Windows OS license server, follow the instructions below to install the product license manager, and license on the license server. The installation will also start the license service to enable license sharing for client computers.

These steps assume:

- you **have not** previously installed the license manager on the license server.
- you received a network license file and have copied the file locally on the license server for selection from within the installation.
- you have access to (downloaded) the product installation on the license server.
- you are **not** installing the products on the license server – only license manager and license file.

1. Close all programs.
2. If using a dongle (USB Device) as HostID, attach it to an active USB port on the computer. **Note: Dongle not supported on Virtual Machines.**
3. Using Windows Explorer, locate the product installation and double-click the executable file to initiate the installation.
4. After a few moments, the **DownStream Installation Wizard** appears.
5. Click **Next** to continue. The Siemens End User License Agreement appears.
6. Review the license agreement. Choose **Agree** and click **Next** to continue. The Select Installation Option page appears.
7. Select **Install or Update Licensing**. The FlexNet Licensing Service is installed and started.
8. After a few moments, the **InstallShield Wizard for DownStream License Manager** appears. Click **Next** to continue. The Customer Information page appears.
9. Optionally, enter **User Name** and **Organization**. Click **Next** to continue. The Destination Folder Selection page appears.
10. Accept the default installation folder, or choose **Change** and browse to an alternate destination folder. Click **Next** to continue. The Licensing Specification page appears.
11. On the Licensing Specification page, choose **Browse to find License File** and click **Next** to continue. The Navigate to License file page appears.
12. Enter the path to the local copy of the license file, or click **Browse** and browse to and select the license file. Click **Next** to continue.
13. The Setup Type page appears. To install all license management content, choose **Complete**.

To customize the license content to install, choose **Custom** and select the content. Consult the [Using Custom Installation](#) section for details on custom installations.

14. Click **Next** to continue. The Ready to Install the Program page appears.
15. Click **Install** to start installation of license manager and the license file.
16. After a few moments, license manager is installed, the license file copied to the correct location and a license check out test performed. A prompt appears stating the status of the license check out. If the check out test is successful, click **OK** to continue.
17. Click **Finish** to complete installation of the license manager and license file.

A few moments after the last installation page closes, you are prompted to install the products.

18. When prompted *Do you want to install the DownStream products now?* Choose **No**.

Note: Follow the New Installation Process – Network License Client Computer instructions to enable computers on a network to access the product license.

New Installation Process – Network License Client Computer

License Type: Network (or Floating)
Host ID: Not Used on Client
Operating System: (Client) 64 bit Windows OS Computer

If you purchased a product with a network license, follow the instructions below to setup access to the license server and install the products on a client computer.

These steps assume:

- you **have not** previously installed the products on the client computer.
- the product license server is running with license availability and is accessible to the client computer via a LAN.
- you know the system name of the license server.
- you have access to (downloaded) the product installation on the client computer.

1. Close all programs.
2. Using Windows Explorer, locate the product installation and double-click the executable file to initiate the installation.
3. After a few moments, the **DownStream Installation Wizard** appears.
4. Click **Next** to continue. The Siemens End User License Agreement appears.
5. Review the license agreement. Choose **Agree** and click **Next** to continue. The Select Installation Option page appears.

For client installations, use License File installation to enable access to the license server from the client computer.

1. Select **Install or Update Licensing**. The FlexNet Licensing Service is installed and started.
2. After a few moments, the **InstallShield Wizard for DownStream License Manager** appears. Click **Next** to continue. The Customer Information page appears.
3. Optionally, enter **User Name** and **Organization**. Click **Next** to continue. The Destination Folder Selection page appears.
4. Accept the default installation folder, or choose **Change** and browse to an alternate destination folder. Click **Next** to continue. The Licensing Specification page appears.
5. On the Licensing Specification page, choose **Set ACT_INC_LICENSE_FILE Environment Variable**. Click **Next** to continue. The Set Environment Variable page appears.
6. Enter the path to the server as “port@server_name”. For example:

7102@SiemensServer

7. Click **Next** to continue. The Setup Type page appears.
8. For client installs, choose **Complete** and click **Next** to continue.

9. Click **Install** to start installation of license manager and setting of the environment variable.
10. After a few moments, license manager is installed, and a license check out test performed. A prompt appears stating the status of the license check out. If the check out test is successful, click **OK** to continue.
11. Click **Finish** to complete the installation of the license manager and license file.

A few moments after the last installation page closes, you are prompted to install the products.

1. When prompted *Do you want to install the DownStream products now?* Choose **Yes** to start the installation of the products.
2. After a few moments, the **InstallShield Wizard for the DownStream Products** appears. Click **Next** to continue.
3. Optionally, enter **User Name** and **Organization**. Click **Next** to continue.
4. The Setup Type page appears. To install all products and content, choose **Complete**.

To customize product content to install, choose **Custom** and select the content. Consult the [Using Custom Installation](#) section for details on custom installations.

5. Click **Next** to continue.
6. Make selections of Installing either **CAM350(DFMStream)** or **BluePrint**, or **Both**.
7. Click **Install** to start installation of the products.
8. After a few moments, the products are installed and a product registration is performed.
9. Click **Finish** when the installation is completed.
10. To start the installed product(s), locate the product shortcut(s) installed on the desktop of the computer.

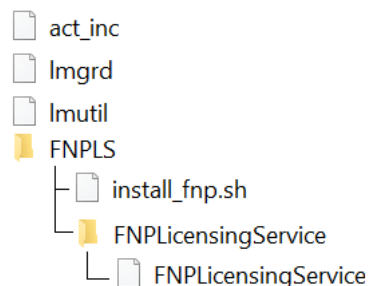
New Installation Process – License Server Linux OS Virtual Machine

License Type: Network (or Floating)
Host ID: UUID
Operating System: 64 bit Linux OS Version 7.9 or 8.10 Virtual Machine

If you have purchased a product with a network license for a 64 bit Linux OS Virtual Machine license server, follow the instructions below to install FlexNet Licensing Service, product license manager and license file on the license server.

These steps assume:

- you **have not** previously installed FlexNet licensing service or license manager on the license server.
 - you received a network license file and have copied the license file locally to the license server.
 - you have access to the Siemens website from the license server.
1. On the license server virtual machine, download the Siemens Linux OS license management tools from the Siemens Support Center web site.
 2. Choose the license management tools applicable to your Linux OS version (7.9 or 8.10).
 3. Uncompress the file contents to a folder on the license server. The content of the uncompressed file is shown below:



4. Copy the license file to a location on the virtual machine. For example, copy the file to the folder hosting the **lmgrd** application and name the license file as *license.dat*.
5. As super user, run the *install_fnp.sh* shell script as shown below to install, configure and start the FlexNet Licensing Service. Running the install script is a requirement. The script guarantees the proper version of FlexNet Licensing binaries are installed, configured and the service started correctly.
 As **super user**, run the *install_fnp.sh* shell script with the `--cert` argument as shown below:

```
install_fnp.sh --cert
```

6. Start the license manager. Type the following:

```
lmgrd -z -c ./license.dat
```

Notes:

1. The FlexNet Licensing Service needs to run continuously. It should be started each time the license server is restarted. To enable that process an additional installation step is required. Add the following line to a nominated user's crontab:

```
@reboot /usr/local/share/FNP/service64/11.19.6/FNPLicensingService -r  
2>&1 >/tmp/fnpd.log
```

2. The virtual machine administrator may want to add an additional line to the crontab to run the above command at regular intervals. This will ensure if the FlexNet Licensing Service is stopped for some unexpected reason, it will be restarted. The FlexNet Licensing Service daemon itself ensures there is never more than one instance running.
3. The required installed path to the FlexNet Licensing Service daemon is:

`/usr/local/share/FNP/service64/11.19.6/FNPLicensingService`
4. The virtual machine's administrator is free to redirect output as required.
5. Both the FlexNet Licensing Service and license manager (lmgrd) must be running in order to serve licenses.
6. Typical messages output on running the startup command are "Licensing Service daemon activated" or "Licensing Service daemon already active".
7. Rather than using cron, administrators may want to add a boot-script for the FlexNet Licensing Service daemon. The following commands can be added to a boot script:

To start the FlexNet Licensing Service:

```
/usr/local/share/FNP/service64/11.19.6/FNPLicensingService -r
```

To stop the FlexNet Licensing Service:

```
/usr/local/share/FNP/service64/11.19.6/FNPLicensingService -k
```

8. When an operation requires FlexNet Licensing Service be running, but the service is not running or not installed correctly, an error is echoed. For example:

The VM Host ID is not available. (-215,14704) - The FlexNet Licensing Service does not appear to be running.

Update Process – Product Software Only

If you downloaded a new release installation from Siemens, follow these steps to update the installed software to the new release. Refer to separate instructions for updating a license file and license servers.

Operating System: Windows OS
Software Host: Windows OS Node-locked or Client Computer

These steps assume:

- you **have** previously installed the products.
 - a product license is accessible to the computer.
 - you have access to (downloaded) the new product installation.
1. Close all programs.
 2. Using Windows Explorer, locate the product installation and double-click the executable file to initiate the installation.
 3. After a few moments, the **DownStream Installation Wizard** appears.
 4. Click **Next** to continue. The Siemens End User License Agreement appears.
 5. Review the license agreement. Choose **Agree** and click **Next** to continue. The Select Installation Option page appears.
 6. Choose **Install DownStream Products**. The installation preparation begins.
 7. A prompt appears asking for **Confirmation to perform an Upgrade of the DownStream products**. Click **Yes** to continue.
 8. After a few moments, the **InstallShield Wizard for DownStream Products** appears. Click **Next** to continue.
 9. After a few moments, the products are installed and a product registration is performed.
 10. When the **InstallShield Wizard Completed** page appears, click **Finish** to complete the installation.
 11. To start the installed programs, locate the product shortcut(s) installed on the desktop of the computer.

Update Process – License File (and License Manager)

If you received a new license file from Siemens, follow these steps to update the license file on a Windows OS computer or license server. These steps will update the license manager to a newer version (if present on the installation), and replace the current license file in use.

If updating a license server, license manager will be shut down to make updates to license manager and the license file. After updating, license manager will be restarted.

This process must be performed on the computer or virtual machine hosting the license manager. It is not possible to remotely update a license server.

License Type:	Node-Locked or Network (or Floating)
HostID:	MAC Address, Dongle or UUID
Operating System:	Windows OS Computer or Virtual Machine

These steps assume:

- you **have** previously installed the license manager.
- license manager is (or was previously) running and product license check out is functioning normally
- you received a new network license file and have copied the license file locally for selection from within the installation.
- you have access to (downloaded) the product installation on the license server.
- you are not installing the products – only updating license manager and license file.

1. Close all programs.
2. Using Windows Explorer, locate the product installation and double-click the executable file to initiate the installation.
3. After a few moments, the **DownStream Installation Wizard** appears.
4. Click **Next** to continue. The Siemens End User License Agreement appears.
5. Review the license agreement. Choose **Agree** and click **Next** to continue. The Select Installation Option page appears.
6. Select **Install or Update Licensing**. The FlexNet Licensing Service is installed and started.
7. A prompt appears asking for **Confirmation to perform an Upgrade of the DownStream License Manager**. Click **Yes** to continue.
8. The **InstallShield Wizard for DownStream License Manager** appears. Click **Next** to continue. The Program Maintenance page appears.
9. Choose **Modify** to update the license manager and license file.
10. The Licensing Specification page appears.

If a cached license file on the installation matches a HostID detected on the license host computer, the **Install License File from Media** option is selected. Select **Next** to install the cached license file and continue.

Otherwise, choose **Browse to find License File**. Click **Next** to continue. The Navigate to License File page appears.

11. Enter the path to the local copy of the **new** license file, or click **Browse** and browse to and select the **new** license file. Click **Next** to continue.

If updating a license server – the Enter Computer Name page appears. If the Computer name displayed matches the server name, click **Next** to continue.

If the computer name is **empty**, the HostID in the selected license file does not match the current server license or other license issues are present. Continue with the installation leaving the name empty. Later steps of the installation will provide greater details regarding the license issues.

12. The Setup Type page appears. To install all license management content, choose **Complete**.

To customize product content to install, choose **Custom** and select the content. Consult the [Using Custom Installation](#) section for details on custom installations.

13. Click **Next** to continue. The Ready to Install the Program page appears.
14. Click **Install** to start installation of license manager and license file.
15. After a few moments, the license manager is installed, the license file copied to the correct location and a license check out test is performed. A prompt appears stating the status of the license check out. If the check out test is successful, click **OK** to continue.
16. Click **Finish** to complete installation of the license manager and license file.

A few moments after the last installation page closes, you are prompted to install the products.

17. When prompted *Do you want to install DownStream products now?* Choose **No**.

Notes:

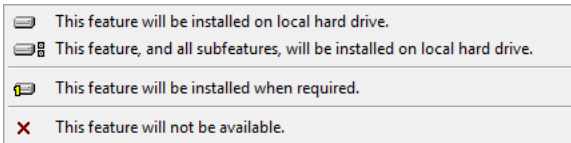
1. Before starting the update, health of the license server should be evaluated. If there are no current failures for the license server, verify license check out is working properly before starting the update.
2. In some installations, it may be necessary to manually stop the license server before starting the license server update process.
3. Some license server updates require the server host computer (or virtual machine) be restarted after the update.

Using Custom Installation

If you have special installation requirements, during installation choose the Custom Setup Type. When this setup type is chosen, you are able to specify the installation content to install. Custom options are available for both license and software content.

Installation Options

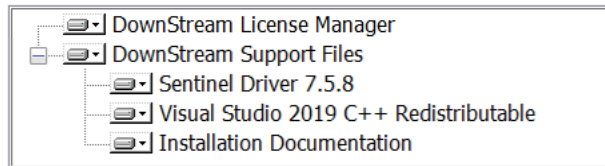
Installation content is arranged in a hierarchy. Choose to install all content and its sub content, or choose specific sub content. For each item in the content list, there are four choices of inclusion in the installation.



Option	Action taken
This feature will be installed on local hard drive	Install this content
This feature, and all sub features, will be installed on local hard drive	Install this content and all of its sub content
This feature will be installed when required	Install this content if required
This feature will not be available	Do not install this content

License Content

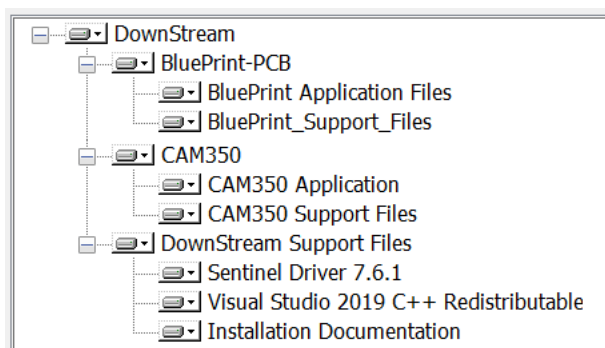
The following options are available when Custom Setup Type is chosen during a license install.



Feature	Includes
DownStream License Manager	License Manager and other licensing tools
Sentinel Driver	Device driver for Dongle (USB Device)
Visual Studio Redistributable	C++ file used by the products
Installation Documentation	Installation documentation including this installation guide

Software Content

The following options are available when Custom Setup Type is chosen during a software install.



Feature	Includes
---------	----------

BluePrint Application Files	BluePrint application and all content required to run BluePrint
BluePrint Support Files	BluePrint Support Files including sample files
CAM350 Application Files	CAM350 application and all content required to run CAM350
CAM350 Support Files	CAM350 Support Files including sample files
Sentinel Driver	Device driver for Dongle (USB Device)
Visual Studio Redistributable	C++ file used by the products
Installation Documentation	Installation documentation including this installation guide

Install To

The Install to folder defines where the read only files for the products will be installed. The default location is:

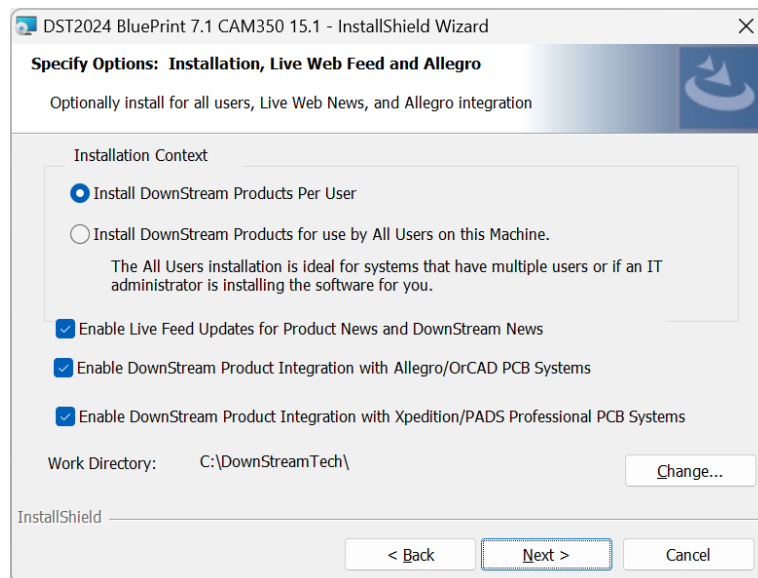
C:\Program Files\DownStream Technologies\\

Other Customization Options

When customizing the installation, these other options are presented.

Installation Context

The Installation Context allows you to choose whether to install the product for all users of the computer or install on a per user basis. The default is to install as Per User (not administrator installation) so each user can customize their own installation. Choose All Users to install the products using an administrator login and have all user logins use the same customization installed by the administrator installation.



Product Integration with Allegro/Orcad PCB

The Allegro integration option enables automatic integration binding with an existing Allegro PCB Design system for the installed Products. BluePrint-PCB supports automatic creation and update of BluePrint-PCB release packages. CAM350 supports cross probing with Allegro PCB. The default is enabled for product integration with Allegro.

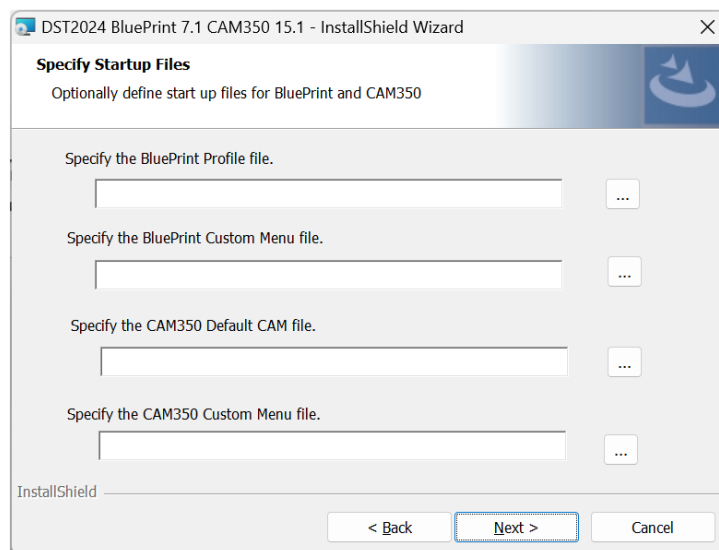
Working Folder (Directory)

The Working Folder is the location where writable work files such as sample, demo and other ancillary files are installed for the products. The default location is:

C:\DownStreamTech\BluePrint-PCB <version>; or
C:\DownStreamTech\CAM350 <version>; or
C:\DownStreamTech\LicenseManager

Startup Files

Default startup Files can be specified for BluePrint-PCB and CAM350/DFMStream. The BluePrint-PCB Profile file (*.bpp) is a file that defines default options set in the Options dialog in BluePrint-PCB. The BluePrint-PCB Custom Menu file (*.bps) is a file that contains the Customization settings for any user interface customization. The CAM350 default CAM file (CAM350.CAM) specifies the default *.cam file opened by CAM350 on startup. The CAM350 Custom camnt95.ini file used to store options set in the Options dialog.



License Borrowing

If you want to use a product license on a client computer while it is disconnected from a license server (for instance a laptop), a license can be borrowed from a license server via a special check out known as license borrowing. With license borrowing, you check out a product license and specify a future date to return the borrowed license. For the specified period, the product license is available exclusively to the remote computer while disconnected from the network.

The license server keeps the borrowed license checked out. The product uses the local borrowed license during the borrow period. Upon expiration of the borrow period, the local borrowed license is no longer available on the remote computer and the license server returns the borrowed license to the pool of available licenses.

Running the LicenseBorrow Utility

LicenseBorrow is a utility installed in the folder C:\DownStreamTech\LicenseManager.

To Borrow a License:

1. Run LicenseBorrow on the client computer where you want to borrow licenses.
2. Enter the Borrow Expiration Date (dd-mmm-yyyy format).
3. Select **Set Borrow Expiration Date** to set the date of license return.
4. Start the product to borrow the license.
5. You can now disconnect your computer from the network and use the borrowed license to run the products.
6. Select **Don't Borrow Anymore Today** to prevent additional licenses from being borrowed.

Checking Borrow Status:

1. Run LicenseBorrow on the client computer.
2. Select **List Currently Borrowed Features** to view borrow status.

The client computer does not have to be connected to the network to determine status.

Clearing the Borrow Period:

Once you have borrowed all product licenses required for the current borrow period you can prevent any additional product licenses from being borrowed for the rest of that day.

1. Run LicenseBorrow on the client PC where the license features were borrowed
2. Select **Don't Borrow Anymore Today** to prevent additional borrows.

To Return Borrowed Licenses Early:

1. Stop all product sessions on the client computer where the license was borrowed.
2. Connect the client computer to the network.
3. Run LicenseBorrow on the client computer.
4. In **DownStream License Manager License File**, enter the License File name or browse to select the license file.
5. Select **Return Borrowed Licenses Early**. All borrowed licenses are returned.

Redundant License Servers

Our products allow customers to deploy redundant licensing systems, enabling them to continue to run applications and check out their full complement of licenses in the event of a prolonged server failure. When a failed server is restored, operation continues as usual without interruptions. A redundant server is physically three interconnected servers operating as one logical server, dispensing from a master pool of licenses.

With three-server redundancy, if any two of the three license servers are up and running (two out of three license servers is referred to as a quorum), the system is functional and serves its total complement of licenses. If you wish to use redundant servers, select stable systems as server machines; in other words, do not pick systems that are frequently rebooted or shut down for one reason or another. The machines that comprise a three-server redundant configuration should:

- Run the same operating system
- Have excellent communications
- Reside on the same subnet network
- Have the same version of License Manager running
- Have the same license file in use

The three servers should be located physically close to each other. This form of redundancy requires that the servers exchange heartbeats periodically, and poor communications can cause poor performance. Avoid configuring redundant servers with slow communications or dial-up links. Three-server redundancy is designed to provide hardware fail protection only and does not provide load-balancing.

The license file on each server must have a server line for each server licensed in the redundancy. For example:

```
SERVER redundant_server1 606DC7C67E6E TCP:20000
SERVER redundant_server2 505CB6B56D5E TCP:20000
SERVER redundant_server3 404BA5A45C4D TCP:20000
DAEMON act_inc C:\DownStreamTech\LicenseManager\act_inc.exe
```

About Redundant License Servers

Each of your license servers should set up and running in a redundant license server setup. If you need help with your setup you should reference the FLEXlm End Users Guide at www.flexerasoftware.com or contact Siemens technical support.

License Rollover - Multiple License Servers on the Same Network

The products support license access from two or more license servers on the same network. However, all license servers must be running the same version of FlexNet service and license manager.

For each license server, follow the instructions for **New Installation Process – License Server for Windows OS** (or other OS).

Once each license server is up and running, locate its license file in use and add a new “USE_SERVER” keyword below the DAEMON line. For example:

```
SERVER Server_1 8C16456371A2 TCP:7102
DAEMON act_inc C:\DownStreamTech\LicenseManager\act_inc.exe
USE_SERVER
```

After editing the license file, shut down license manager and restart it to update the server.

For each client computer, follow the instructions for **New Installation Process – Network License Client Computer**. When setting the path to the license server, substitute the “port@server_name” entry for a multiple server license file path statement. For example:

```
C:\Flexlm\Server1_license.dat; C:\Flexlm\Server2_license.dat
```

This will set the ACT_INC_LICENSE_FILE environment variable to:

```
ACT_INC_LICENSE_FILE=C:\Flexlm\Server1_license.dat;C:\Flexlm\Server2_license.dat
```

Silent Installation

Installation of the products can be run silently on client computers by running the product installation from a command prompt window with arguments. There are three command line arguments required for silent installation:

`/f1` = path to DST2024.iss response file

`/zDST_PROPFILE` = path to installation properties file.

A sample command line syntax for silent execution is as follows:

```
DownStream_2024_b2024.exe /f1<path> /zDST_PROPFILE=<path>
```

An example with file paths present:

```
DownStream_2024_b2024.exe /f1"C:\DST2023.iss" /zDST_PROPFILE="C:\props_master.txt"
```

Files Required for Silent Installation

There are two files required to run silent installation.

Response file DST2024.iss – supplied by Siemens

Installation properties file – user customized install response file

NOTE: The DST2024.iss and a sample properties file (props_master.txt) are located in the following product installation folder:

```
C:\Program Files\DownStream Technologies\2024\Install_Documentation
```

ISS Response File

The response file DST2024.iss provided by Siemens is required for silent installation execution. It should not be altered in any way.

NOTE: On the command line, you must specify the absolute file path for the response file or the results will be unpredictable.

Installation Properties File

An installation properties file contains installation keywords and responses for install prompts and other custom installation options.

NOTE: On the command line, you must specify the absolute file path for the properties file or the results will be unpredictable.

The available entries in the properties file for the product installation are as follows:

INSTALLDIR	= <Installation Folder>
ADDLOCAL	= <Product Features to Install>
DST_ALL_USERS	= <0 or 1>
DST_ENABLE_LIVE_WEB_NEW_FEEDS	= <0 or 1>
DST_ENABLE_ALLEGRO_INTEGRATION	= <0 or 1>
DOWNSTREAMTECH	= <Working Directory Folder>
DST_SRC_CAM350_MENU_FILE	= <CAM350 Custom Menu File>
DST_SRC_CAM350_CAM_FILE	= <CAM350 Default CAM File>
DST_SRC_BP_MENU_FILE	= <BluePrint Custom Menu File>
DST_SRC_BP_PROFILE_FILE	= <BluePrint Profile File>
DST_LIC_ENVIRONMENT_VAR	= <FlexLM ACT_INC_LICENCE_FILE Setting>
REBOOT	= <ReallySuppress or Suppress or Force>

Where:

INSTALLDIR – path to the folder where the product executable files are to be located (or updated). For example:

INSTALLDIR = “C:\Program Files\DownStream Technologies”

ADDLOCAL - the product features to install during silent installation. The features must be comma separated. If ADDLOCAL is not present, all product features are installed by default.

To install BluePrint-PCB, set ADDLOCAL to:

```
DST_BP_CAM350,BluePrint,BluePrint_Application,BluePrint_Support_Files
```

To install CAM350, set ADDLOCAL to:

```
DST_BP_CAM350,CAM350,CAM350_Application,CAM350_Support_Files
```

To install support files set ADDLOCAL to:

```
DST_BP_CAM350,DownStream_Support_Files,Install_Documentation,Sentinel_Driver_761,VCRedistributable,AccessDatabaseEngine
```

DST_ALL_USERS – if set to “1” all other user logins use the same customization information installed by the administrator installation.

DST_ENABLE_ALLEGRO_INTEGRATION – if set to “1” automatic integration binding with an existing Allegro PCB Design system for the installed products.

DOWNSTREAMTECH – folder where the product sample and demo files are located.

DST_SRC_CAM350_MENU_FILE - a CAM350 menu customization file (*.settings) to install.

DST_SRC_CAM350_CAM_FILE - the default CAM file for CAM350. For example, cam350.cam).

DST_SRC_BP_MENU_FILE - a BluePrint menu customization file (*.bps) to install.

DST_SRC_BP_PROFILE_FILE - a Blueprint profile file (*.bpp) to install.

DST_LIC_ENVIRONMENT_VAR - the value for the license variable **ACT_INC_LICENSE_FILE**. This is commonly used for client installations that obtain product licenses via a network license server.

REBOOT - preference for reboot prompting. Set to "Force" to always prompt for reboot. Set to "Suppress" to only prompt for reboot if needed. Set to "ReallySuppress" to suppress all restart prompts.

The following example property file installs only CAM350 for a network licensed client installation. This will install CAM350, default initialization and CAM350 files and set the **ACT_INC_LICENSE_FILE** environment variable to enable licensing. In addition, all restart prompts will be suppressed.

```
INSTALLDIR="C:\DownStreamTech2024\"
ADDLOCAL=DST_BP_CAM350,CAM350,CAM350_Application,CAM350_Support_Files
DST_SRC_CAM350_MENU_FILE="W:\DownStreamTech\CAM350 15.x\CAM350.settings"
DST_SRC_CAM350_CAM_FILE="W:\DownStreamTech\CAM350 15.x\CAM350.cam"
DST_LIC_ENVIRONMENT_VAR=7102@FLEXLMLICENSE
REBOOT=ReallySuppress
```

The following example property file installs only BluePrint-PCB for a node-locked installation with a Dongle. Startup files are specified for custom BluePrint-PCB menu file and a BluePrint-PCB profile file.

```
INSTALLDIR="C:\DownStreamTech2024\"
ADDLOCAL=DST_BP_CAM350,DownStream_Support_Files,Install_Documentation,
          Sentinel_Driver_761,VCRedistributable
DST_SRC_BP_MENU_FILE="W:\DownStreamTech\BluePrint-PCB 7.x\BluePrint-PCB 70.bps"
DST_SRC_BP_PROFILE_FILE="W:\DownStreamTech\BluePrint-PCB 7.x\Profile 70.bpp"
DST_LIC_ENVIRONMENT_VAR="W:\DownStreamTech\LicenseManager\license.dat"
```

Patents, Copyrights and Trademarks

PATENTS

"AUTOMATED PCB MANUFACTURING DOCUMENTATION RELEASE PACKAGE SYSTEM

AND METHOD", United States Patent No. 7,409,666 B2

"ADAPTIVE TEMPLATE SYSTEM FOR AN AUTOMATED PCB MANUFACTURING RELEASE

PACKAGE SYSTEM", United States Patent No. 8,875,072 B2

COPYRIGHT NOTICE

Unpublished work. © 2025 Siemens.

Legal Notices

License Grant and Conditions.

- (a) License Grant. This product is subject to and governed by terms and conditions between Siemens Industry Software Inc. or one of its affiliates ("Siemens") and its licensees, e.g., the original agreement accompanying it or a separate agreement between Siemens and its licensees, that governs its use, including restrictions on use, warranties, disclaimers, and limitations on liability and other aspects of this product by licensees, ("License") and which itself is subject to applicable supplemental terms. Siemens reserves all rights in the Siemens technology not expressly granted therein.
- (b) License Compliance. Siemens reserves the right to embed a reporting mechanism in its software to determine unauthorized use of licenses. The security mechanism does not transmit technical or business data processed with the product.
- (c) Third-Party and Open Source Software. The software may contain third-party software, technology and other materials, including open-source software, licensed by third parties under separate terms.

Prohibited Actions and Responsibilities.

- (a) Prohibited Actions. Licensee and its users will not permit any person or entity to resell, transfer, sublicense, publish, loan or lease the product or use the product for the benefit of any third party without the prior written consent of Siemens. Licensee and its users may not reverse engineer, disassemble, decompile or otherwise attempt to discover the source code of the software or its associated algorithms, which are the trade secrets of Siemens. Licensee and its users will not otherwise modify, alter, tamper with, repair or create derivative works of the software. These prohibitions do not apply to the extent they conflict with applicable law or the License applicable to the licensee.

- (b) Security. Licensee or its users are responsible for the security of its systems and data, including products employed on licensee's or its user's systems.
- (c) Third-Party Claims. Siemens will not be liable for any claim or demand made against licensee or its users by any third party, except for Siemens' obligations to indemnify under the License applicable to the licensee.

Warranties and Disclaimers.

Siemens makes no warranties except for the express limited warranties, if any, provided in the License applicable to the licensee. Representations about products, features or functionality in any communication constitute technical information, not a warranty or guarantee. Siemens disclaims all other warranties including, without limitation, the implied warranties of merchantability and fitness for a particular purpose. Siemens does not warrant that the operation of the products will be uninterrupted or error free.

Preview (Beta) Features.

All features or services offered prior to their general release that are labeled or otherwise communicated as 'preview', 'pre-release', 'early access', 'beta', or 'non-general release' ("Previews"), are provided at no extra charge and "AS IS" without warranty, indemnity, support, or other commitments. Siemens may change, limit, suspend, or terminate any Previews at any time. Previews are not ready for production usage, and any use of any Previews is at the user's sole risk and discretion. Anything identified as being 'demo', 'test', 'evaluation', 'beta', or similar must be used solely for internal test and evaluation purposes, and not for production or other commercial purposes.

License Rights Applicable to the U.S. Government.

The products and associated documentation are commercial products that were developed exclusively at private expense. If products are acquired directly or indirectly for use by the U.S. Government, then products are considered "Commercial Items" and "Commercial Computer Software" or "Computer Software Documentation," as defined in 48 C.F.R. §2.101 and 48 C.F.R. §252.227-7014(a)(1) and (a)(5), as applicable. Software and its associated documentation may only be used under the terms and conditions of the governing agreement as required by 48 C.F.R. §12.212 and 48 C.F.R. §227.7202. The U.S. Government will only have the rights set forth in the governing agreement, which supersedes any conflicting terms or conditions in any government order document, except for provisions which are contrary to applicable mandatory federal laws. Siemens will not be required to obtain a security clearance or otherwise be involved in accessing U.S. Government classified information.

Documentation

Documentation contains trade secrets or otherwise confidential information owned by Siemens Industry Software Inc. or its affiliates (collectively, "Siemens"), or its licensors. Access to and use of this documentation is strictly limited as set forth in Licensee's applicable agreement(s) with Siemens. This documentation may not be copied, distributed, or otherwise disclosed by Licensee without the express written permission of Siemens, and may not be used in any way not expressly authorized by Siemens.

This documentation is for information and instruction purposes. Siemens reserves the right to make changes in specifications and other information contained in this documentation without prior notice, and the reader should, in all cases, consult Siemens to determine whether any changes have been made.

For the avoidance of doubt, neither the Licensee nor any third party shall, under any circumstances, use, incorporate, or otherwise employ the Documentation, in whole or in part, for the purpose of training, developing, testing, or improving any large language models, artificial intelligence systems, machine learning algorithms, or related artificial intelligence technologies.

Trademark Information and Acknowledgement

Autodesk, DXF and AutoCAD are registered trademarks of Autodesk, Inc.

FLEXIm is a registered trademark of Flexera Software, Inc.

Microsoft, Windows, Microsoft Paint, Microsoft Word, Microsoft PowerPoint, Microsoft Excel are registered trademarks of Microsoft Corporation.

Microsoft, Windows, Windows 8, Windows 7, and Windows 10 are registered trademarks of Microsoft Corporation.

Adobe, Acrobat Reader, Adobe PDF Library, Adobe logo, Acrobat, PostScript, and Photoshop are registered trademarks of Adobe Systems Incorporated.

The Postscript language is copyrighted by Adobe Systems Incorporated.

CAM350, BluePrint, PADS Layout, ExpeditionPCB, Xpedition, BoardStation and PowerPCB are registered trademarks of Siemens.

Adaptive Templates is a registered trademark of Siemens.

Allegro and OrCAD are registered trademarks of Cadence Design Systems, Inc.

HOOPS is a registered trademark of Tech Soft 3D, Inc.

Omnify is a registered trademark of Omnify Software.

CAM350 uses AES encryption and decryption routines written by Dr. Brian Gladman. The source code for these routines is available to any interested party under an open source BSD or GPL license from the AES project page on Dr. Gladman's web site. This is the same AES code that is incorporated into CAM350. Siemens would like to express its appreciation to Dr. Gladman for making this code available.

Mimalloc is a Copyright © of Microsoft Corporation 2018-2021.

CAM350 uses Microsoft's Mimalloc general purpose memory allocator, written by Daan Leijen. Mimalloc is available to any interested party under the MIT license.

All other trademarks or registered trademarks are the property of their respective owners.

版权和法律声明

版权声明

未发表作品。© 2025 Siemens.

法律声明

许可授予和条件。

- (a) 许可授予。本产品受Siemens Industry Software Inc.或其关联公司之一（"西门子"）与其被许可人之间的条款和条件（例如，本产品随附的原始协议或西门子与其被许可人之间的单独协议）的约束和管辖，这些条款和条件规定了本产品的使用，包括使用限制、保证、免责声明和责任限制以及被许可人使用本产品的其他方面（"许可"），许可本身受适用的补充条款的约束。西门子保留对未明确授予的西门子技术的所有权利。
- (b) 许可证合规性。西门子保留在其软件中嵌入报告机制的权利，以确定未经授权使用许可证的情况。该安全机制不会传输使用产品处理的技术或业务数据。
- (c) 第三方软件和开源软件。软件可能包含第三方软件、技术和其他材料，包括第三方根据单独条款许可的开源软件。

禁止行为和责任。

- (a) 禁止行为。未经西门子事先书面同意，被许可人及其用户不得允许任何个人或实体转售、转让、分许可、出版、出借或租赁本产品，或为任何第三方的利益使用本产品。被许可人及其用户不得对软件的源代码或其相关算法进行反向工程、反汇编、反编译或以其他方式试图发现这些源代码或算法，这些源代码及算法属于西门子的商业秘密。被许可人及其用户不得以其他方式修改、变更、篡改、修复或创建软件的衍生作品。当这些禁令与适用法律或适用于被许可人的许可相冲突时，则此类禁令不予适用。
- (b) 安全。被许可人或其用户负责其系统和数据的安全，包括被许可人或其用户系统中使用的产品。
- (c) 第三方索赔。对于任何第三针对被许可人或其用户提出的任何索赔或要求，西门子概不负责，但西门子根据适用于被许可人的许可进行赔偿的义务除外。

保证和免责声明。

除适用于被许可人的许可中所规定的明示的有限保证（如有）之外，西门子不作任何保证。任何沟通中有关产品、特性或功能的表述均构成技术信息，而非担保或保证。西门子否认所有其他担保，包括但不限于对适销性和特定用途适用性的默示担保。西门子不保证产品的运行不会中断或没有错误。

预览版（测试版）功能。

在全面发布之前提供的、且标识为或以其他方式告知为 "预览（preview）"、"预发布（pre-release）"、"早期访问（early access）"、"测试版（beta）"或 "非全面发布（non-general release）"（"预览"）的所有功能或服务，均不收取额外费用，"按原样"予以提供，且不提供任何保证、保修、赔偿、支持或其他承诺。西门子可随时更改、限制、暂停或终止任何预览。预览尚未准备好用于生产

使用，且用户对任何预览的任何使用均由其自行决定和承担全部风险。任何标识为 "演示 (demo)"、"测试 (test)"、"评估 (evaluation)"、"测试版 (beta)" 或类似字眼的内容必须仅用于内部测试和评估目的，而不得用于生产或其他商业目的。

适用于美国政府的许可权。

产品和相关文档是完全由私人出资开发的商业产品。如果产品是直接或间接购置供美国政府使用，则产品被视为《美国联邦法规》(C.F.R.) 第 48 编第 2.101 中以及第 48 编 252.227-7014(a)(1) 和 (a)(5) 中定义的 "商业项目 (Commercial Items)" 和 "商业计算机软件 (Commercial Computer Software)" 或 "计算机软件文档 (Computer Software Documentation)" (如适用)。软件及其相关文档仅可根据《美国联邦法规》(C.F.R.) 第 48 编 12.212 和 227.7202 的要求在其管辖协议的条款和条件下使用。美国政府仅享有管辖协议中规定的权利，该协议取代任何政府命令文件中的任何冲突条款或条件，但违反相关强制性联邦法律的条款除外。西门子不需要获得安全许可或以其他方式参与访问美国政府保密信息。

文件

文档包含 Siemens Industry Software Inc. 或其关联公司 (统称 "西门子") 或其许可方所拥有的商业秘密或其他机密信息。按照被许可人与西门子签订的适用协议的相关约定，对本文档的访问和使用须受到严格限制。未经西门子明确书面许可，被许可人不得复制、分发或以其他方式披露本文档，也不得以任何未经西门子明确授权的方式使用本文档。

本文档仅供参考和说明使用。西门子保留在不事先通知的情况下更改本文档中包含的规格和其他信息的权利，且在任何情况下，阅读方都应咨询西门子以确定是否有任何更改。

为避免疑义，在任何情况下，被许可人或任何第三方均不得为训练、开发、测试或改进任何大型语言模型、人工智能系统、机器学习算法或相关人工智能技术的目的，使用、合并或以其他方式使用全部或部分文档。

商标信息及确认

Autodesk、DXF 和 AutoCAD 是 Autodesk, Inc. 的注册商标。

FLEXIm 是 Flexera Software, Inc. 的注册商标。

Microsoft、Windows、Microsoft Paint、Microsoft Word、Microsoft PowerPoint 和 Microsoft Excel 是 Microsoft Corporation 的注册商标。

Microsoft、Windows、Windows 8、Windows 7 和 Windows 10 是 Microsoft Corporation 的注册商标。

Adobe、Acrobat Reader、Adobe PDF Library、Adobe 徽标、Acrobat、PostScript 和 Photoshop 是 Adobe Systems Incorporated 的注册商标。

Postscript 语言的版权归 Adobe Systems Incorporated 所有。

CAM350、BluePrint、PADS Layout、ExpeditionPCB、Xpedition、BoardStation 和 PowerPCB 是西门子的注册商标。

Adaptive Templates是西门子的注册商标。

Allegro 和 OrCAD 是 Cadence Design Systems, Inc. 的注册商标。

HOOPS 是 Tech Soft 3D, Inc. 的注册商标。

Omnify 是 Omnify Software 的注册商标。

CAM350 使用 Brian Gladman 博士编写的 AES 加密和解密路径 (AES encryption and decryption routines)。这些路径的源代码可以在 BSD开源许可或 GPL开源许可下提供给感兴趣的任何人或实体，并可以从 Gladman博士的网站上的 AES项目页面获得。CAM350 也采用了相同的 AES 代码。西门子对 Gladman 博士提供这些代码表示感谢。

Mimalloc 版权归Microsoft Corporation所有 (2018年-2021年)。

CAM350 使用由 Daan Leijen 编写的Microsoft's Mimalloc general purpose memory allocator。Mimalloc 在 MIT 许可下向任何感兴趣的人开放。

所有其他商标或注册商标为其各自所有者的财产。

著作権及び法的通知

著作権について

未公開著作物© 2025 Siemens.

法的通知

ライセンスの付与及び条件

- (a) ライセンス付与。本製品は、Siemens Industry Software Inc.又はその関連会社（以下、「シーメンス」という。）とライセンシー間の契約条件、例えば、本製品に付随する原契約又はシーメンスとライセンシー間の別途契約が適用し、当該条件はライセンシーによる本製品の使用制限、保証、免責、責任の制限及びその他の事項も含めてその使用を規定する（以下、「ライセンス」という。）ものであり、当該ライセンスは適用される補足条項に従うものとします。シーメンスは、これらで明示的に付与されていないシーメンスの技術に関わる全ての権利を留保します。
- (b) ライセンス遵守 シーメンスは、ライセンスの不正使用を判断するための報告メカニズムをソフトウェアに組み込む権利を留保します。そのセキュリティメカニズムは、製品で処理される技術データ又はビジネスデータを送信するものではありません。
- (c) サードパーティ及びオープンソースソフトウェア 本ソフトウェアには、別途の条件に基づき第三者によりライセンスされたオープンソースソフトウェアを含む、第三者のソフトウェア、技術及びその他の資料が含まれている場合があります。

禁止行為及び責任

- (a) 禁止行為 ライセンシー及びそのユーザーは、シーメンスの書面による事前の同意無しに、いかなる個人又は法人にも、本製品の再販、譲渡、サブライセンス、出版、貸与、リースせず、又は第三者の利益のために本製品の使用を許可しないものとします。ライセンシー及びそのユーザーは、シーメンスの営業秘密であるソフトウェアのソースコード又は関連アルゴリズムをリバースエンジニアリング、逆アセンブル、逆コンパイル、又はその他の方法で解析を試みてはなりません。ライセンシー及びそのユーザーは、本ソフトウェアの修正、変更、改ざん、修理又は派生物の作成を行ってはなりません。これらの禁止事項は、適用法又はライセンシーに適用されるライセンスに抵触する場合は、その範囲において適用されません。
- (b) セキュリティ ライセンシー又はそのユーザーは、ライセンシー又はそのユーザーのシステムで使用されている製品を含め、そのシステム及びデータのセキュリティに責任を負うものとします。
- (c) 第三者からの請求 シーメンスは、ライセンシーに適用されるライセンスに基づくシーメンスの明示的限定保証が定められている場合を除き、第三者からライセンシー又はそのユーザーに対してなされた請求又は要求について、一切責任を負わないものとします。

保証の否認

シーメンスは、ライセンシーに適用されるライセンスに明示的な限定保証が定められている場合を除き、一切の保証を行いません。いかなる通信においても、製品、機能、又は性能に関する記述は、技術情報を構成するものであり、保証又は保証内容を構成するものではありません。シーメンスは、他の全ての保証を排除します。これには、商品性及び特定の目的に対する適合性の黙示の保証を含みますが、これらに限定されません。シーメンスは、本製品の動作について障害が無いこと、又はエラーが発生しない旨の保証しません。

プレビュー（ベータ版）の特徴

「プレビュー」、「プレリリース」、「アーリーアクセス」、「ベータ」、又は「非一般リリース」（以下、「プレビュー」）と表示されている一般リリース前に提供される全ての機能又はサービスは、保証、補償、サポート、又はその他の義務を負わず、追加料金無しで「現状有姿」で提供されます。シーメンスは、プレビューをいつでも変更、制限、停止、終了することができます。プレビューは本番環境での使用の準備ができていません。プレビューの使用は、ユーザー自身の単独の責任と裁量において行われるものとします。「demo」、「test」、「evaluation」、「beta」、又はこれらに類似するものとして識別されるものは、社内のテスト及び評価目的のみに使用するものとし、本番環境又はその他の商業目的では使用できません。

米国政府に適用されるライセンス権。

本製品及び関連文書は、民間資金のみで開発された商用製品です。本製品が米国政府による使用のために直接的又は間接的に取得された場合、本製品は、連邦規則集第 48 編第 2.101 条（48 C.F.R. §2.101）及び連邦規則集第 48 編第 252.227-7014 条(a)(1)及び(a)(5)（48 C.F.R. §252.227-7014 (a)(1)および(a)(5)）（それぞれ該当する場合に応じて）に定義される、「商用品目」及び「商用コンピュータ・ソフトウェア」又は「コンピュータ・ソフトウェア・ドキュメンテーション」とみなされます。ソフトウェア及びそれに関連する文書は、連邦規則集第48編第12.212条及び連邦規則集第48編第227.7202条（48 C.F.R. §12.212および48 C.F.R. §227.7202）により要求される適用される契約の条件の下でのみ使用することができます。米国政府が有する権利は、適用される契約に明示された範囲に限られるものであり、適用される強制的な連邦法に反する条項を除き、当該契約は、政府の注文書等に記載された矛盾する又は条件に優先します。シーメンスは、セキュリティ・クリアランスを取得する必要はなく、米国政府の機密情報へのアクセスに関与する必要もありません。

ドキュメンテーション

ドキュメンテーションには、Siemens Industry Software Inc.若しくはその関連会社（以下、総称して「シーメンス」という。）、又はそのライセンサーが所有する企業秘密又はその他の機密情報が含まれています。ドキュメンテーションへのアクセス及びその使用は、ライセンシーがシーメンスと締結する契約に定める通り、厳格に制限されています。ライセンシーは、シーメンスの書面による明示的な許可なく、ドキュメンテーションをコピー、配布、又はその他の方法で開示することはできず、シーメンスが明示的に許可していない方法で使用することはできません。

ドキュメンテーションは情報提供及び説明を目的としたものです。シーメンスは、ドキュメンテーションに記載されている仕様及びその他の情報を予告なく変更する権利を留保します。

誤解を避けるために付言すると、ライセンシーも第三者も、いかなる状況においても、大規模言語モデル、人工知能システム、機械学習アルゴリズム、又は関連する人工知能技術のトレーニング、開発、テスト、又は改良を目的として、ドキュメンテーションの全部又は一部を使用、組込み、又はその他の方法で使用してはなりません。

商標情報及び謝辞

Autodesk、DXF及びAutoCADは、Autodesk, Inc.の登録商標です。

FLEXImはFlexera Software, Inc.の登録商標です。

Microsoft、Windows、Microsoft Paint、Microsoft Word、Microsoft PowerPoint、Microsoft ExcelはMicrosoft Corporationの登録商標です。

Microsoft、Windows、Windows 8、Windows 7、及びWindows 10は、Microsoft Corporationの登録商標です。

Adobe、Acrobat Reader、Adobe PDF Library、Adobeロゴ、Acrobat、PostScript、PhotoshopはAdobe Systems Incorporatedの登録商標です。

Postscript言語の著作権はAdobe Systems Incorporatedに帰属します。

CAM350、BluePrint、PADS Layout、ExpeditionPCB、Xpedition、BoardStation、PowerPCBはシーメンスの登録商標です。

Adaptive Templatesはシーメンスの登録商標です。

Allegro及びOrCADは、Cadence Design Systems, Inc.の登録商標です。

HOOPSはTech Soft 3D, Inc.の登録商標です。

OmnifyはOmnify Softwareの登録商標です。

CAM350は、Brian Gladman博士によって書かれたAES暗号化・復号化ルーチンを使用しています。これらのルーチンのソースコードは、Gladman博士のウェブサイトのAESプロジェクトのページから、オープンソースのBSD又はGPLライセンスで、興味のある人に提供されています。これは、CAM350に組み込まれているのと同じAESコードです。シーメンスは、このコードを公開してくれたGladman 博士に感謝の意を表します。

MimallocはMicrosoft Corporation 2018-2021の著作権©です。

CAM350は、Daan Leijen氏によって書かれたMicrosoftのMimalloc汎用メモリアロケータを使用しています。MimallocはMITライセンスのもと、関係者であれば誰でも利用可能です。

その他全ての商標又は登録商標は、各所有者に帰属します。